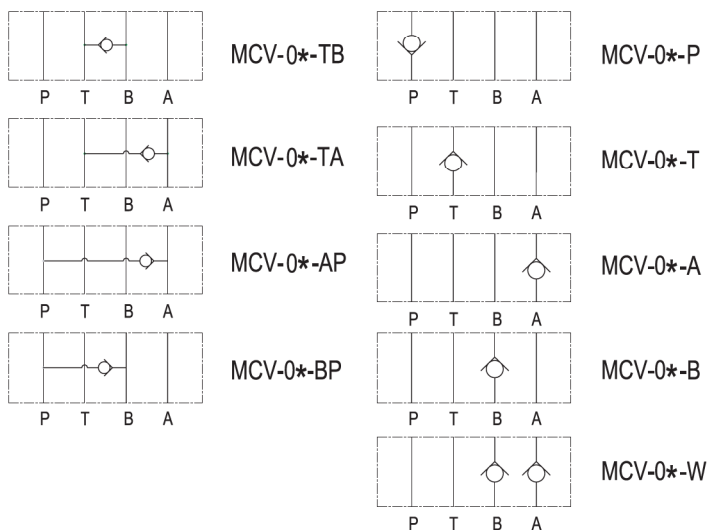


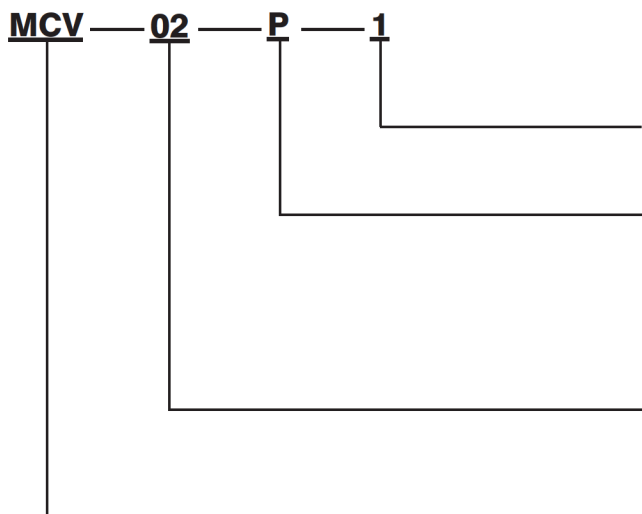


# Modular Check Valve

## 積層型止回閥



### 型號說明/HOW TO ORDER



開啓壓力 **CRACKING PRESSURE**  
 1 : 0.5 kgf/cm<sup>2</sup>    2 : 4.5 kgf/cm<sup>2</sup>

控制孔 **CONTROL PORT**  
 P: P孔 P port    TA: A至T孔 A to T port  
 T: T孔 T port    TB: B至T孔 B to T port  
 A: A孔 A port    AP: P至A孔 P to A port  
 B: B孔 B port    BP: P至B孔 P to B port  
 W: A和B孔 A and B port

通徑 **PORT SIZE**  
 02 : 1/4"    06 : 3/4"  
 03 : 3/8"

積層型止回閥 **Modular Check Valve Series**

### 規格說明/SPECIFICATIONS

型式 MODEL	最高使用壓力 MAX. PRESSURE kgf/cm <sup>2</sup>	最大流量 MAX. FLOW l/min	開啓壓力 CRACKING PRESSURE kgf/cm <sup>2</sup>	重量 WEIGHT (kg)
MCV-02-P/T/A/B/TA/TB/PA/PB	250	50	1 : 0.5    2 : 4.5	1.2
MCV-02-W				1.3
MCV-03-P/T/A/B/TA/TB/PA/PB	250	100	1 : 0.5    2 : 4.5	2.5
MCV-03-W				3.5
MCV-06-P	250	180	1 : 0.5    2 : 4.5	14.0



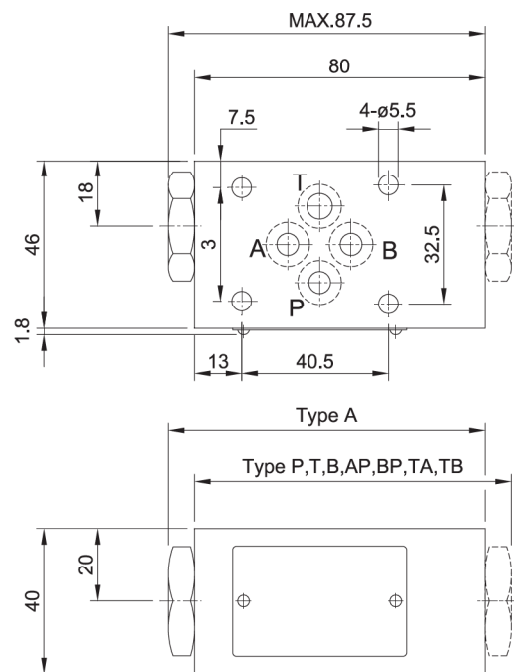
# Modular Check Valve

積層型止回閥

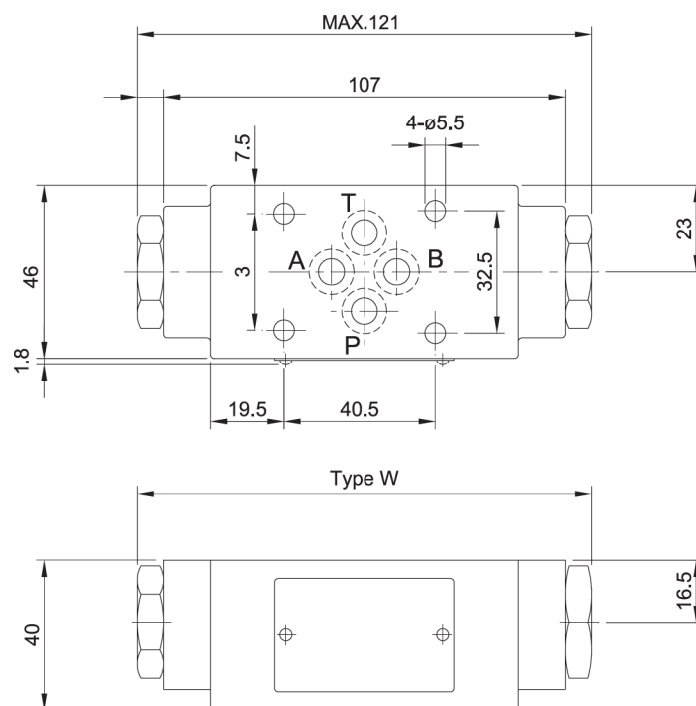
## 安裝尺寸/INSTALLATION DIMENSIONS

單位 UNIT : mm

### ■ MCV-02-A. B. P. T. AP. BP. TA. TB



### ■ MCV-02-W





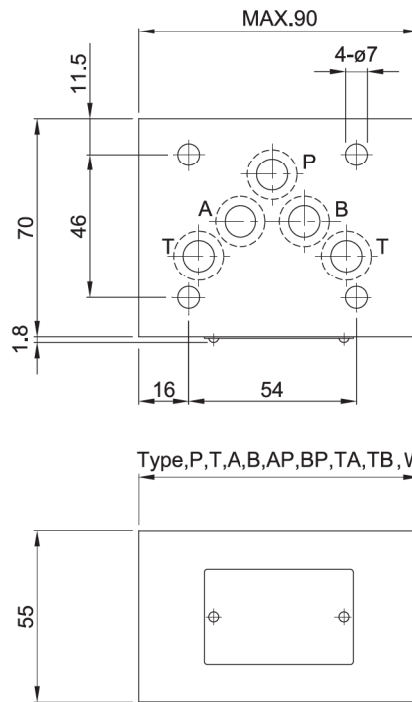
# Modular Check Valve

## 積層型止回閥

### 安裝尺寸/INSTALLATION DIMENSIONS

單位 UNIT : mm

#### ■ MCV-03



#### ■ MCV-06-P

